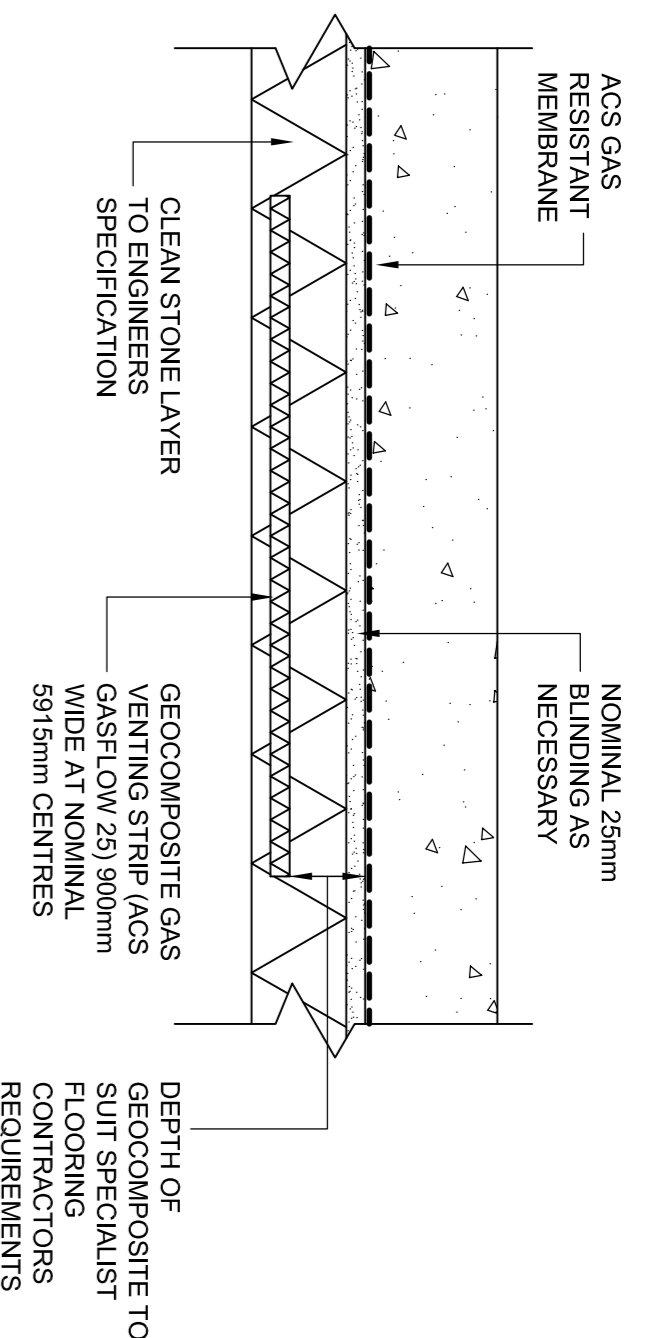
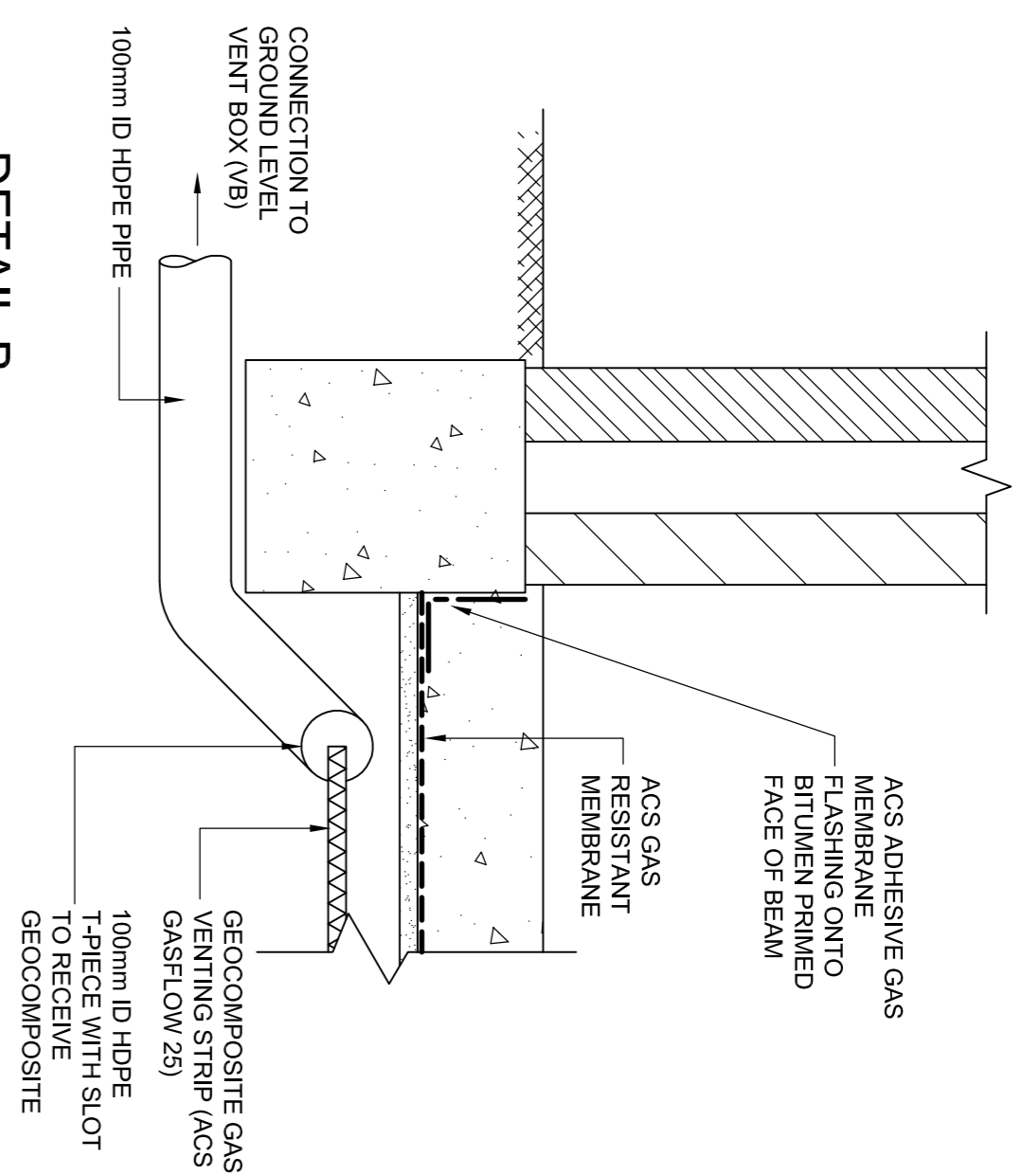


SPECIFICATION FOR GAS PROTECTION MEASURES

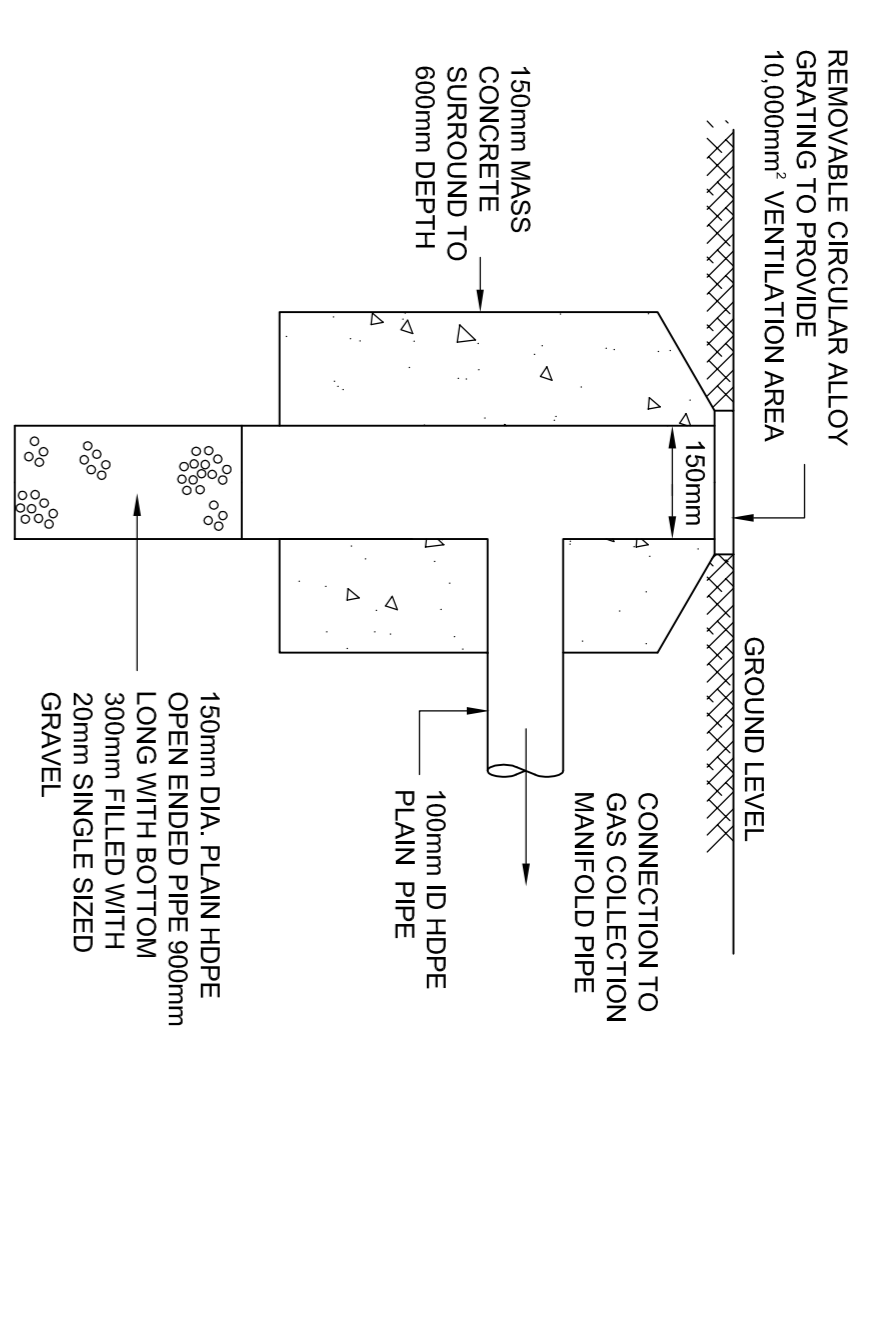
1. Membrane
Gas resistant membrane to be high performance loose lay membrane containing encapsulated aluminium core. Maximum methane permeability $1 \times 10^{-10} \text{ m}^3/\text{m}^2/\text{s}$. (ACS Gas Resistant Membrane)
2. Installation and protection in accordance with manufacturers recommendations. Membrane to be laid on minimum 25mm blinding throughout except where laid directly above geocomposite gas venting layer.
3. Individual membrane sheets to be lapped minimum 100mm and sealed with 30mm wide proprietary butyl tape (ACS Butyl Sealant Tape).
4. All services and other penetrations to be sealed with self adhesive gas resistant membrane (ACS Adhesive Gas Membrane).
5. Geocomposite Gas Venting Strip
Geocomposite to comprise single sided 25mm thick capped high density polyethylene core with high permeability geotextile fabric bonded to core dimples (ACS Gasflow 25).
6. Core to have a minimum 13mm clear void and a minimum crushing strength of 100KN/m^2 .
7. Geocomposite strips (900mm wide) at nominal 5915mm centres with connections on opposite sides of the building to 100mm diameter T-piece manifold pipe.
Perimeter Ventilation
T-piece manifold pipe connected to ground level vent boxes (VB) at nominal 5915mm centres. Exact positions to be agreed on site to suit door openings and Architects requirements.
- 8.



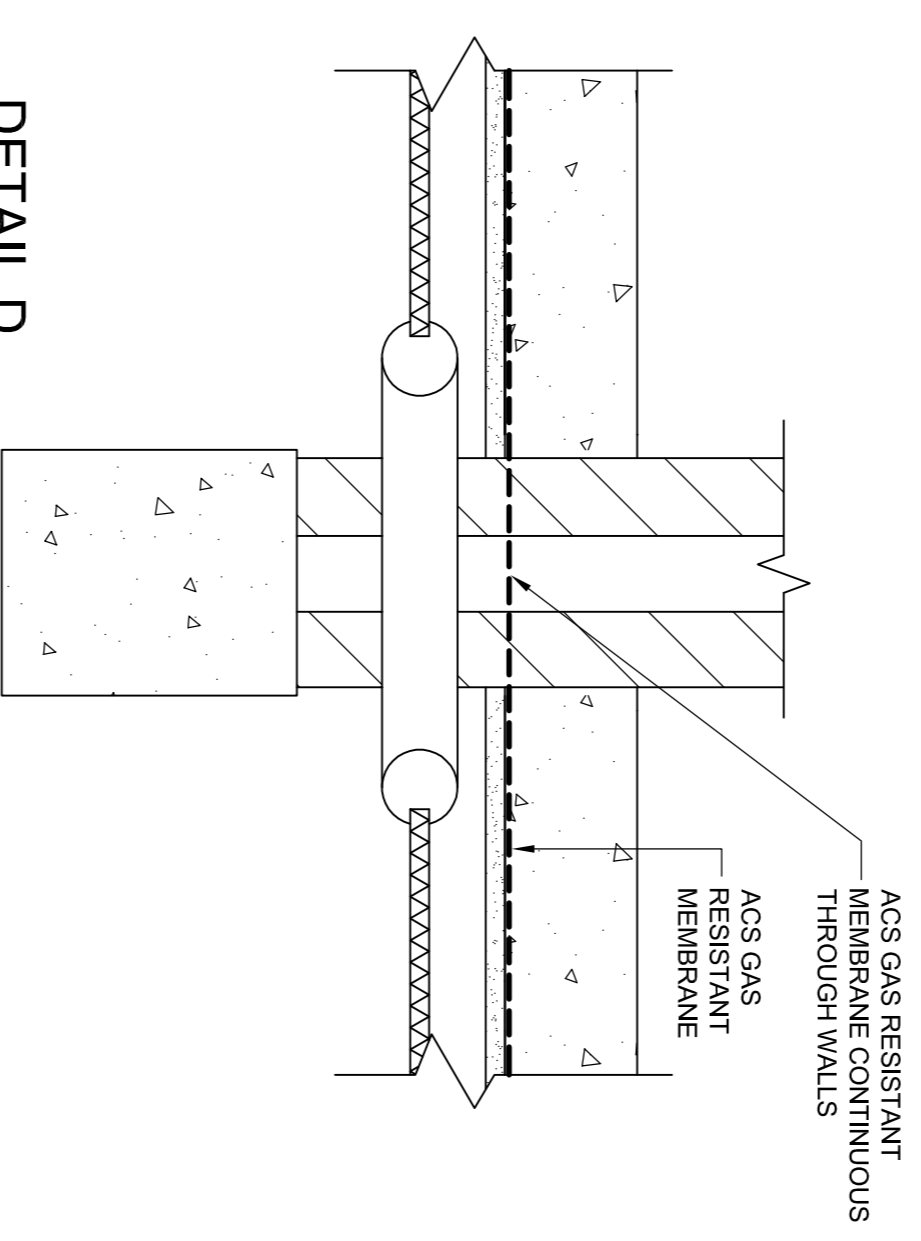
DETAIL A
TYPICAL SLAB SECTION
SCALE - 1:10



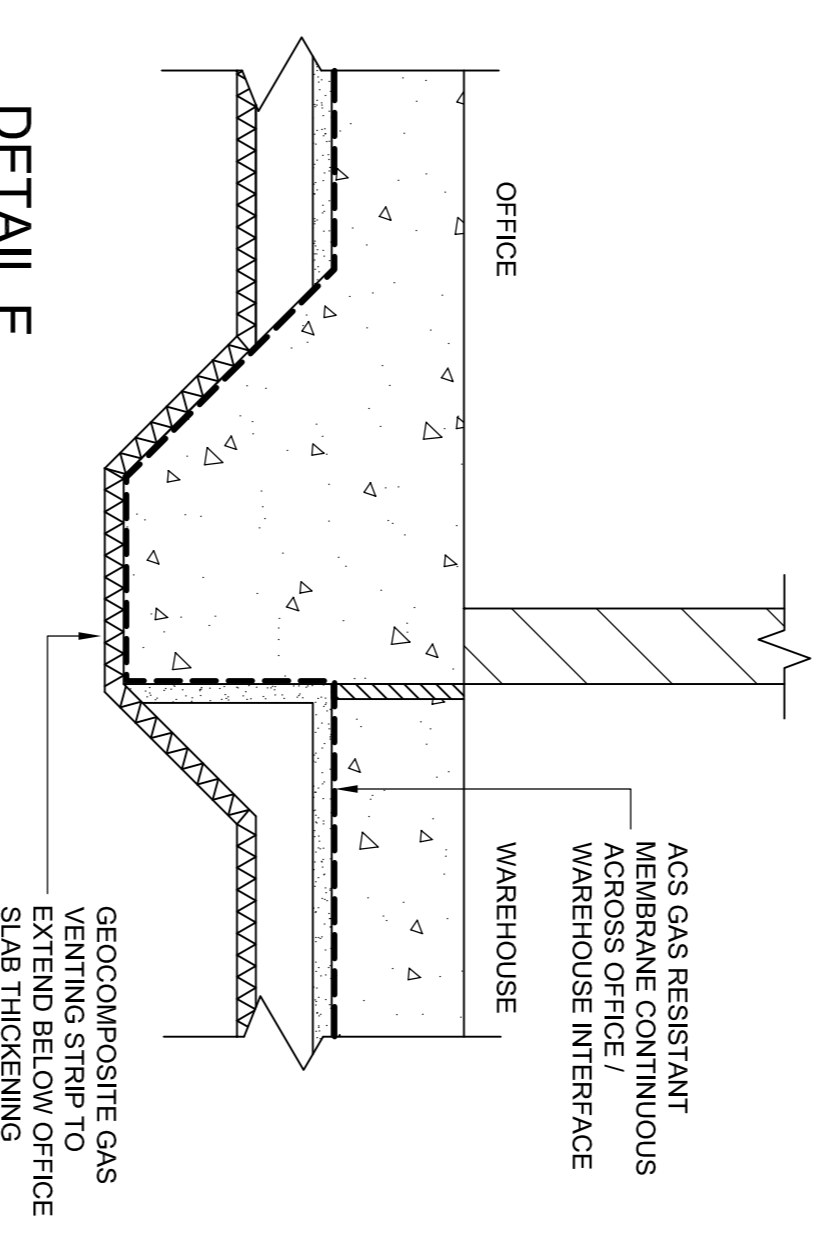
DETAIL B
TYPICAL PERIMETER SECTION
SCALE - 1:10



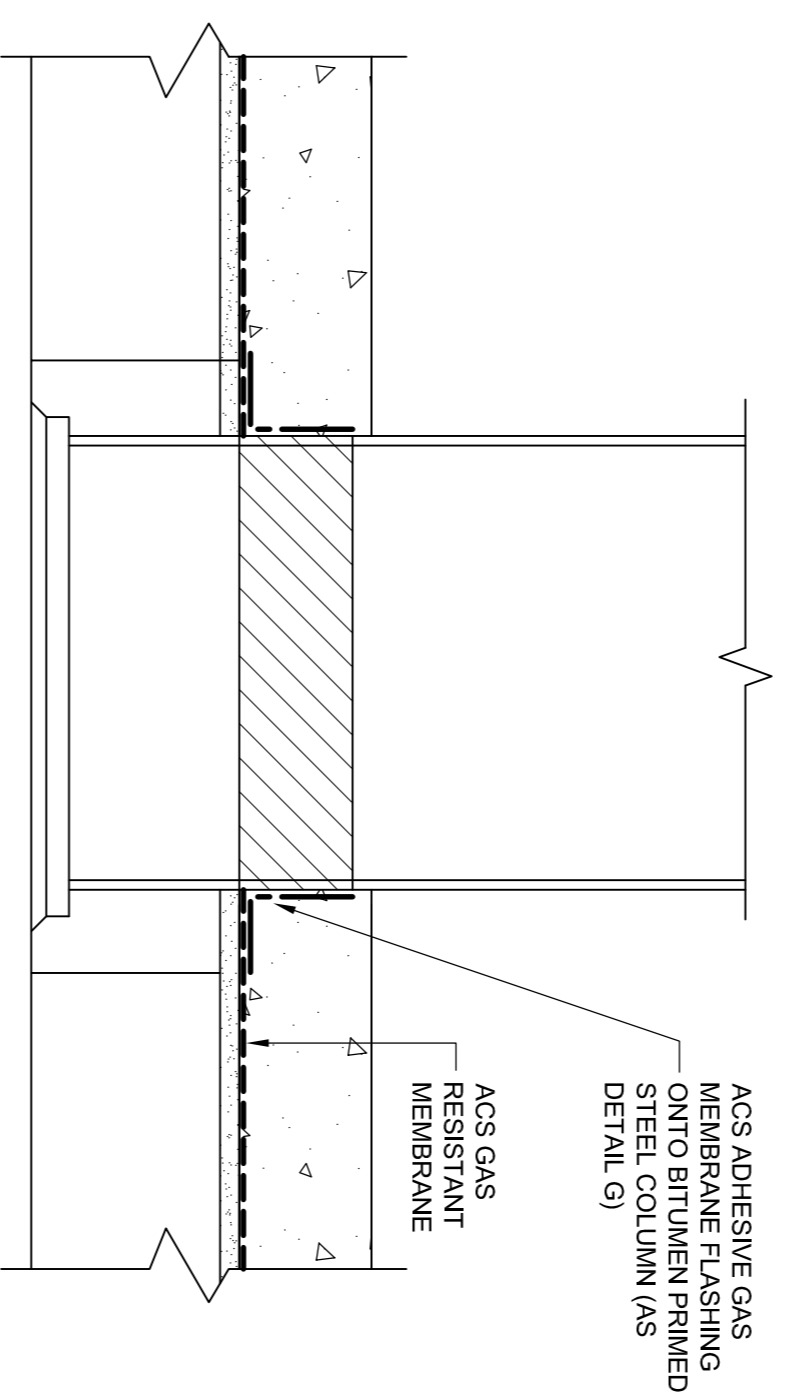
DETAIL C
GROUND LEVEL VENT BOX (VB)
SCALE - 1:10



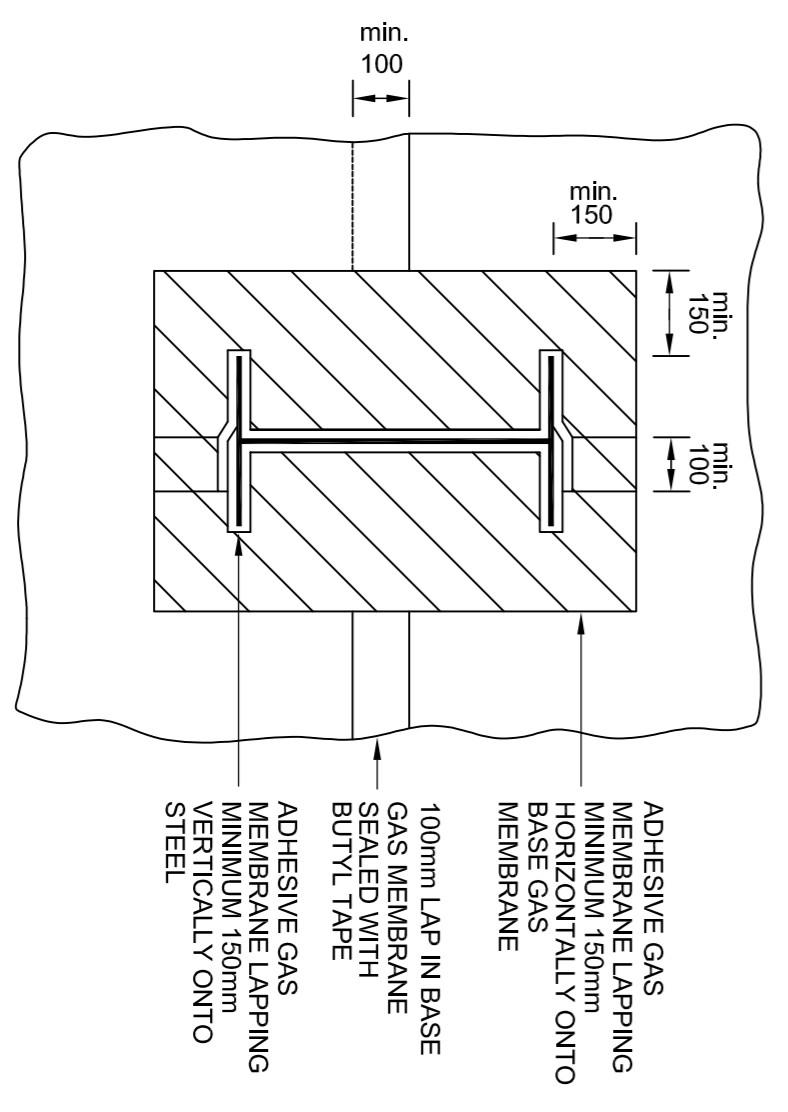
DETAIL D
SECTION AT GRIDLINE N
(ENTRANCE / OFFICES / RETURNS)
SCALE - 1:10



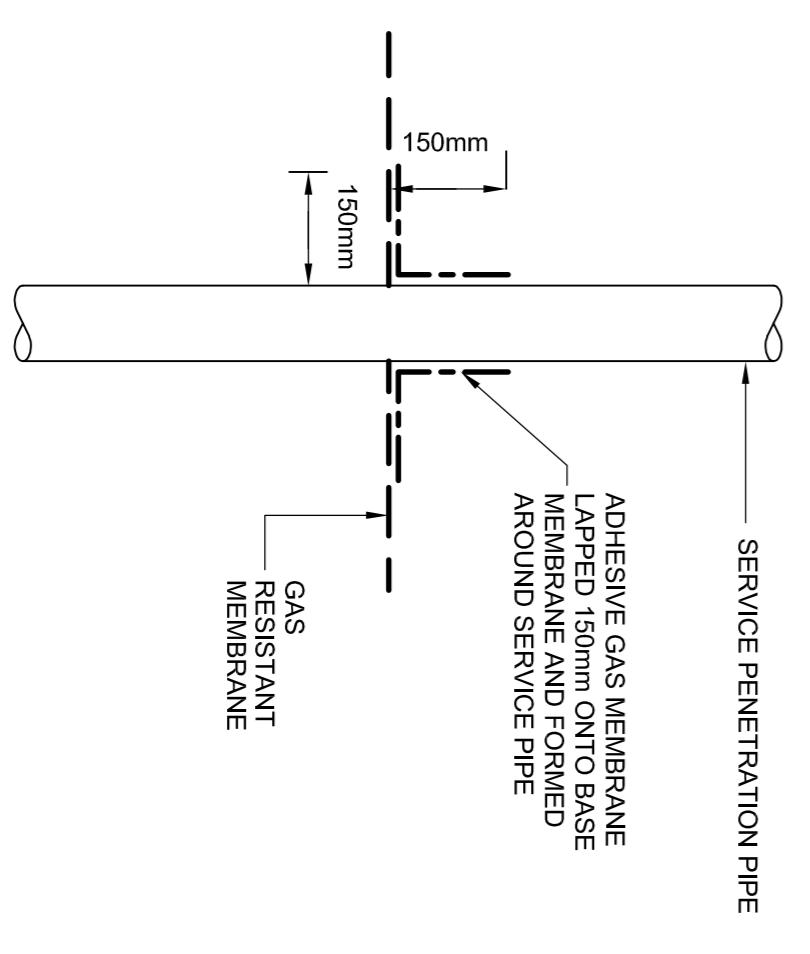
DETAIL E
SECTION AT OFFICE / WAREHOUSE INTERFACE
(GRIDLINE B)
SCALE - 1:10



DETAIL F
SECTION AT COLUMN
SCALE - 1:10



DETAIL G
STEEL COLUMN FLASHING
NOT TO SCALE



DETAIL H
SEAL TO PIPE PENETRATION
NOT TO SCALE

APPROVED

REVISION	A	Issued as Approved.	CHECKED	APPROVED	DATE
					04/12/06
CLIENT	McLAREN CONSTRUCTION LIMITED		TITLE	GAS PROTECTION MEASURES (DETAIL S)	
SCHEME	B & C, BARNFIELD ROAD, SWINDON		DRAWN	SAHB	CHECKED
ENGINEERS	SPLIMAN ASSOCIATES		DRAWN	HDS	APPROVED
ENGINEERS	Geotechnical & Environmental Engineers		DATE	SEPTEMBER 2006	REF
CONTACT	Tel: 01384-820578 Fax: 01384-823251		SCALE	AS SHOWN	DRAWING NO.
					J0612702