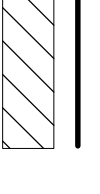


**SPECIFICATION FOR GAS PROTECTION MEASURES**

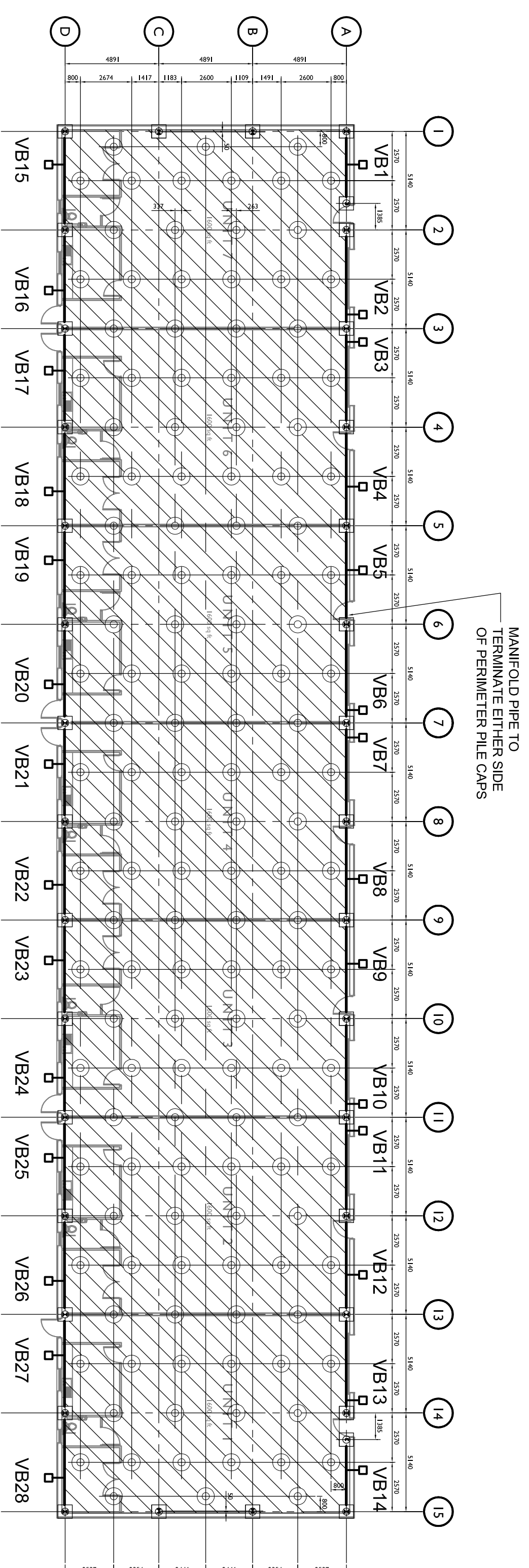
- Membrane**
- Gas resistant membrane to be high performance loose lay membrane containing 20 micron encapsulated aluminium core. Maximum methane permeability  $1 \times 10^{-11} \text{ m}^3/\text{m}^2/\text{s}$ . (ACS Gas Resistant Membrane)
  - Installation and protection in accordance with manufacturers recommendations. Membrane to be laid on minimum 25mm blinding throughout except where laid directly above geocomposite gas venting layer.
  - Individual membrane sheets to be lapped minimum 100mm and sealed with 30mm wide proprietary butyl tape (ACS Butyl Sealant Tape).
  - All services and other penetrations to be sealed with self adhesive gas resistant membrane (ACS Adhesive Gas Membrane).
  - Geocomposite Gas Venting Layer
  - Geocomposite to comprise single sided 25mm thick cusped high density polyethylene core with high permeability geotextile fabric bonded to core dimples (ACS Gasflow 25).
  - Core to have a minimum 13mm equivalent clear void and a minimum crushing strength of 100kN/m<sup>2</sup>.
  - Geocomposite venting layer to entire building footprint with connectors to 100mm diameter high density polyethylene gas collection manifold pipe along the two long sides of the building.  
**At Vents**
  - Ground level vent boxes (VB) to be provided to front and rear elevation at approximate locations shown. Vent boxes to be locally repositioned around door openings etc.

**REFERENCE**

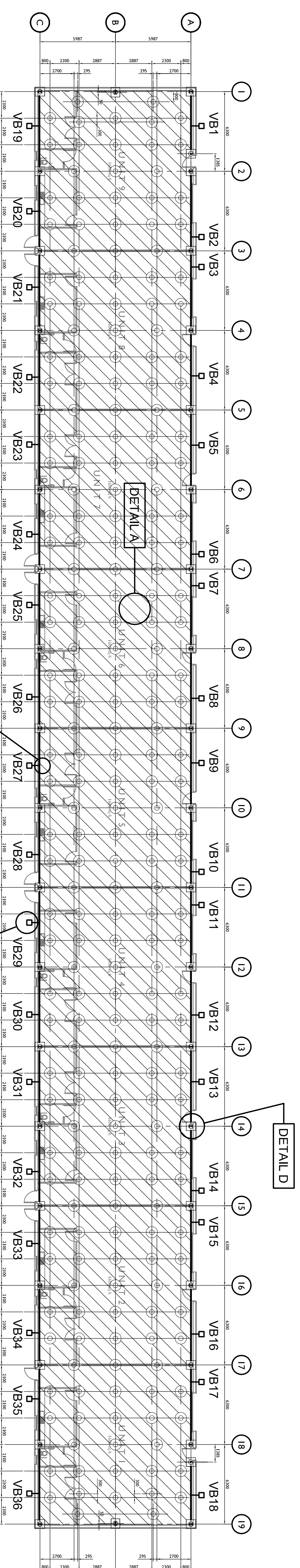
- 100mm ID HDPE Gas Collection Manifold Pipe
- Geocomposite Gas Venting Layer (ACS Gasflow 25)
- Ground Level Vent Box (VB)



VB1



BLOCK 1



BLOCK 2

**CONSTRUCTION STATUS**

REVISION	DESCRIPTION	CHECKED	APPROVED	DATE

<b>SPLIMAN ASSOCIATES</b> Geotechnical & Environmental Engineers	CLIENT R G CARTER	TITLE GAS PROTECTION MEASURES (PLAN - STARTER UNITS)
Tel: 01384-820578 Fax: 01384-822251	SCHEME TESCO STORE GREAT YARMOUTH.	DRAWN CHECKED
	DATE APRIL 2002	APPROVED
	REF J02024	SCALE 1:200
		DRAWING NO. J02024/11